



User Manual

User Program(GUI) Function

(Rev.01)



Table of Contents

Table of Contents	2
1 . Installation and connection of the Program	3
1 - 1 . Installable PC environment	3
1 - 2 . User Program(GUI) installation Method	3
1 - 3 . Connecting PC with DriveModule	6
2 . Main Window	7
2 - 1 . Menu	7
2 - 2 . Toolbar	8
2 - 3 . Output	8
2 - 4 . Board List	9
3 . I/O Monitoring and I/O Logic Setting	10
3 - 1 . Ez-IO-PE-I16 series Monitoring	10
3 - 2 . Ez-IO-PE-O16 series Monitoring	12
3 - 3 . I/O Logic Setting	13

This manual describes how to operate User Program(GUI).

For more information, refer to related Manuals as following.

- (1) [User Manual-Text](#)
- (2) User Manual-Communication Function

1 . Installation and connection of the Program

This chapter describes the user program(GUI) used for drive installation and commissioning.

1 - 1 . Installable PC environment

Type : Compatible PC/AT

Ethernet 10/100base-T/TX Lan Card

Hard dis more than 10MB

Screen SVGA(1024×768 이상)

CPU Pentium4 2.0GHz or more

OS : Windows2000/XP/VISTA/ 7/ 8.1/ 10(32/64Bit) allows normal installation into PC

1 - 2 . User Program(GUI) installation Method

Download [Ezi-MOTION_Plus-E_SETUP] program on FASTECH

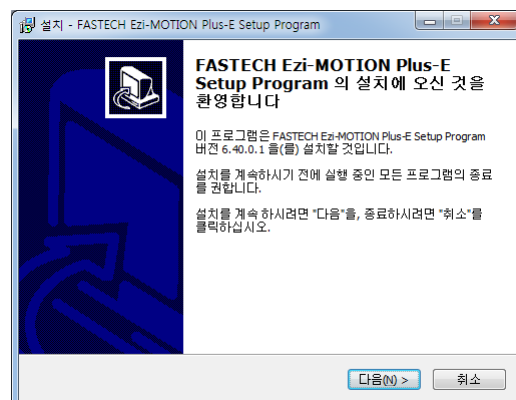
website(http://fastech.co.kr/bbs/bbs/board.php?bo_table=eng_board5) and install as shown below.

Select a language and click 'OK'



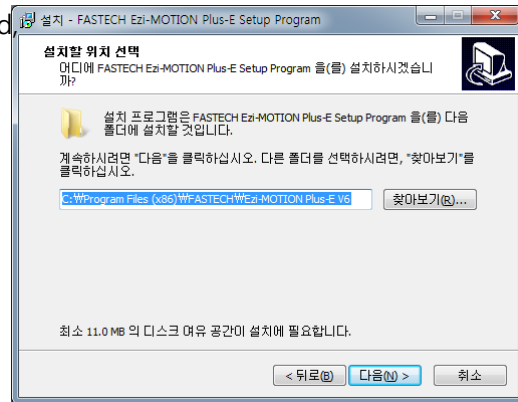
Installation Start window.

Click 'Next'

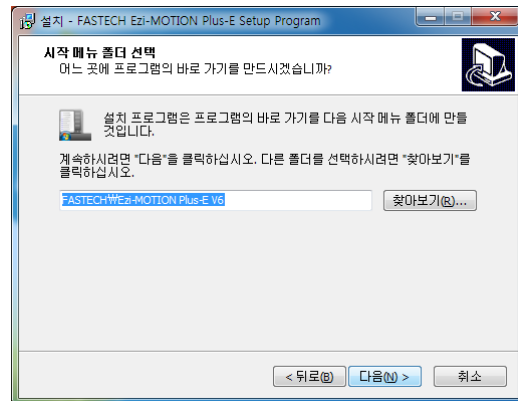


Select a folder where the program is installed

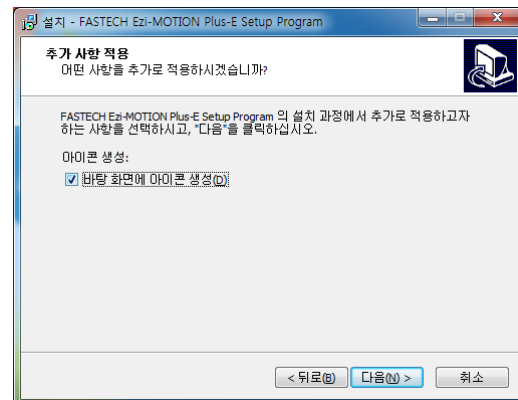
And click 'Next'



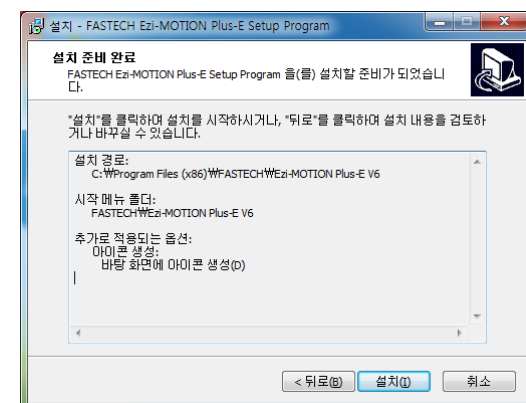
Select a Start menu folder and click 'Next'



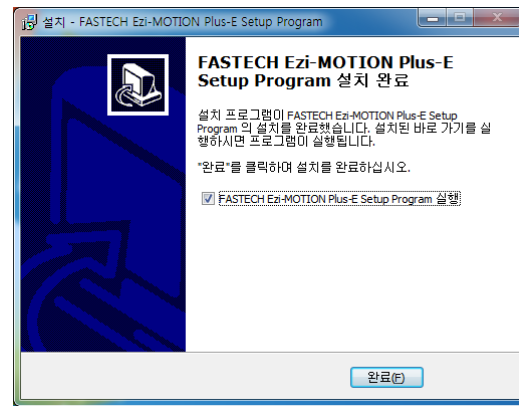
Select '바탕화면에 아이콘을 생성여부' and click Next.



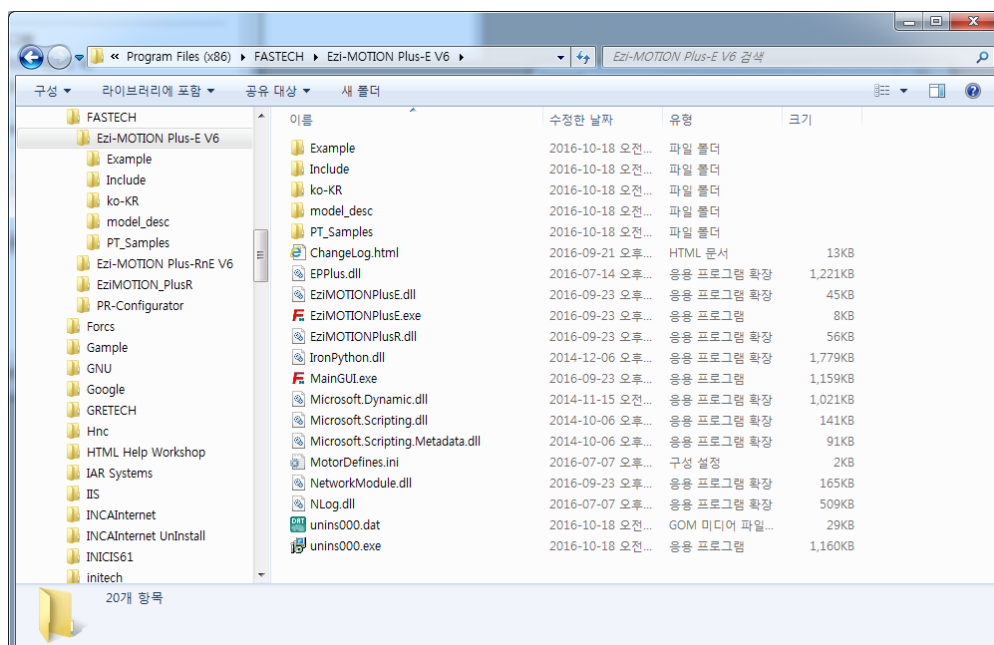
Check '설치 환경' and click 'install'



Installation is completed.



When installation is completed, you can find the below files in the selected folder.



- 1) Include folder : *.dll, *.lib, *.h files (32bit)
X64 subfolder of include folder:*.dll, *.lib (64bit)
- 2) Example folder : Source code for sample
- 3) PT_Samples folder : Sample data files for position table

1 - 3 . Connecting PC with DriveModule

- (1) To communicate with controller module, the user should prepare Ethernet cable and connect it with the PC. For more information, please refer to 「[User Manual-Text](#)」.

Execute User program(GUI), Ezi-MOTION Plus-E V6and click 'Connect'. Then the following window will be displayed



버튼	설명
ADD	Enter IP Address and click 'Add' If the item does not exist with added IP Address, List will not be added.
Broadcast Search	Search every item that can be connected and add it to the List.
Refresh Status	Check the connection status of listed item.
Connect	Connect the listed item and execute GUI.

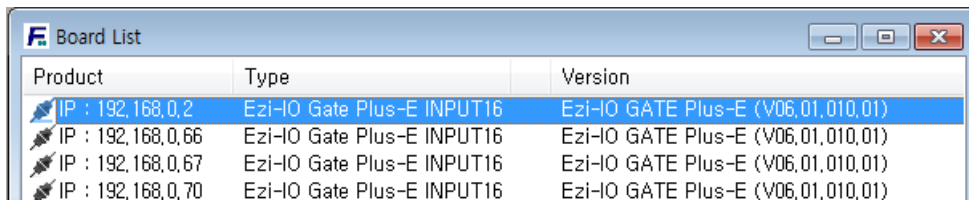
- After setting each IP Address and clicking 'Broadcast Search', every item will be displayed on the list. Click 'Connect' then every item will be connected with GUI.

주의	1. Please assign different IP Addresses of connected drives to a single network (segment). 2. If the connection fails, please check IP conflict and IP Address of PC.
-----------	--

- (2) When the connection is completed, the window will appear as show below.

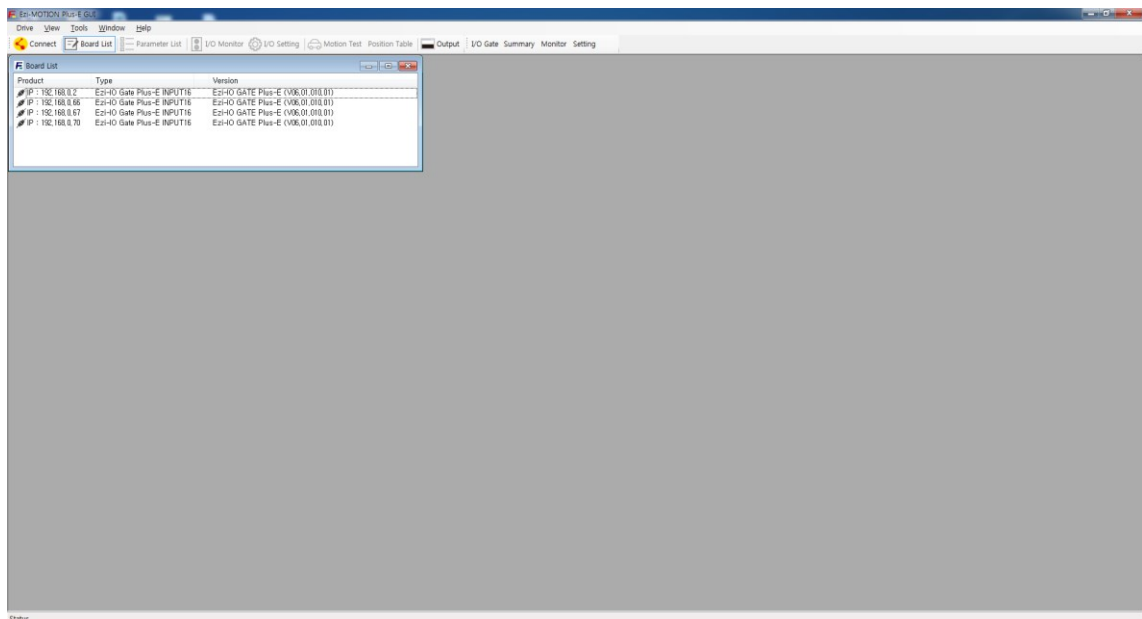
- 1) IP Address of Connected drives
- 2) Type of all connected motors and drives

3) Firmware Version



Product	Type	Version
IP : 192,168,0,2	Ezi-IO Gate Plus-E INPUT16	Ezi-IO GATE Plus-E (V06,01,010,01)
IP : 192,168,0,66	Ezi-IO Gate Plus-E INPUT16	Ezi-IO GATE Plus-E (V06,01,010,01)
IP : 192,168,0,67	Ezi-IO Gate Plus-E INPUT16	Ezi-IO GATE Plus-E (V06,01,010,01)
IP : 192,168,0,70	Ezi-IO Gate Plus-E INPUT16	Ezi-IO GATE Plus-E (V06,01,010,01)

2 . Main Window



This is basic window to operate the program. Each window is displayed in this window.

The user can open each window with a toolbar.

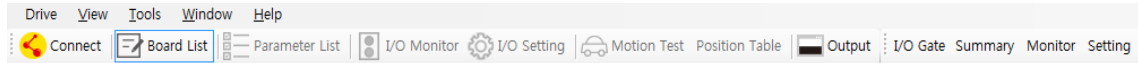
Depending on the type of connected board, the icon of toolbar is Enable or Disable.

2 - 1 . Menu



There is 'View' menu that shows other screens and a 'Drive' menu that allows you to select the communication connection and disconnection functions.

2 - 2 . Toolbar



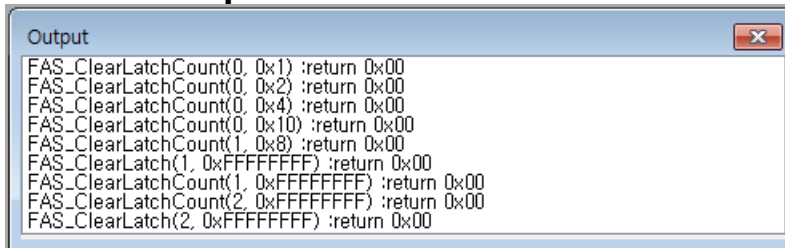
Depending on the type of connected board, the icon of toolbar is Enable or Disable.

For the Ezi-IO Plus-E product, Connect, Board List, Output, Output Summary, Monitor, Setting icons are Enable.

Click each button, and the following functions will be executed.

Button	Description
Connect	To connect or disconnect with the drive
Board List	To display connected module information and communication status
Parameter list	To set parameter values related to operation control like a position command
I/O Monitor	To monitor digital I/O signals of CN1 connector
I/O Setting	To set digital I/O signals of CN1 connector
Motion Test	To execute motion commands such as Jog operation, Position operation, Origin return operation
Position Table	To input and execute position table data
Output	To display DLL function corresponding to the command being executed
Summary	To check the entire digital input / output of the connected Ezi-IO.
Monitor	To confirm digital input / output and other function for Ezi-IO
Setting	To set, save, load the digital input / output level of Ezi-IO

2 - 3 . Output



Click 'Output' at the Toolbar or check [Menu] – [View] – [Output], and the above window will be displayed.

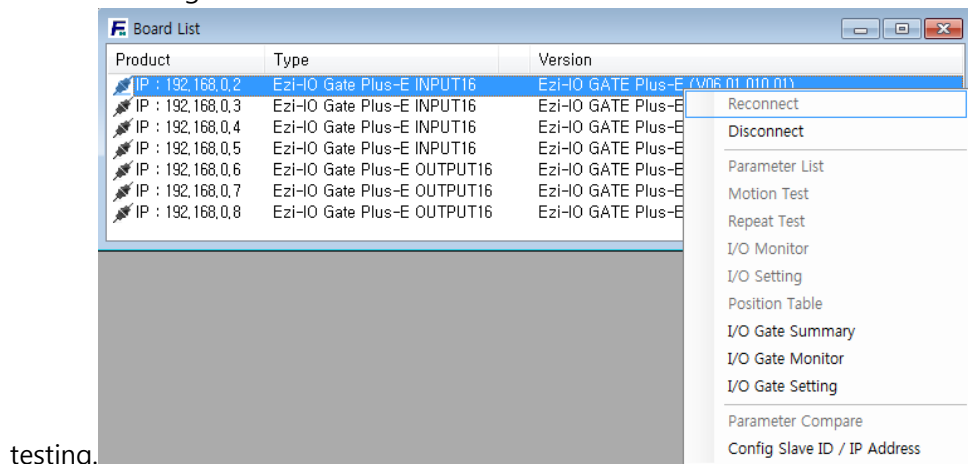
This window includes commands used for the controller. The user can check that which function is used, how parameter values are inputted, and how they are normally processed.

The above window displays functions which the user inputs or functions used when the user clicks each button. For more information of commands, please refer to [「User Manual-Communication Function」](#)

2 - 4 . Board List

This window displayed drive list connected.

Select the connected drive and Right-click. Then there are buttons to go to windows for function setting or



testing.

- 1) Board IP address and type.
- 2) **Firmware Version number** of board.

- Disconnect / Reconnect

Disconnect : Disconnect the communication

Reconnect : Reconnect the communication

- I/O Gate Monitor

Input(I16x type board) : To monitor information such as input / latch. and to control related to latch.

Output(O16 type board) : To monitor and control the output.

- I/O Gate Setting

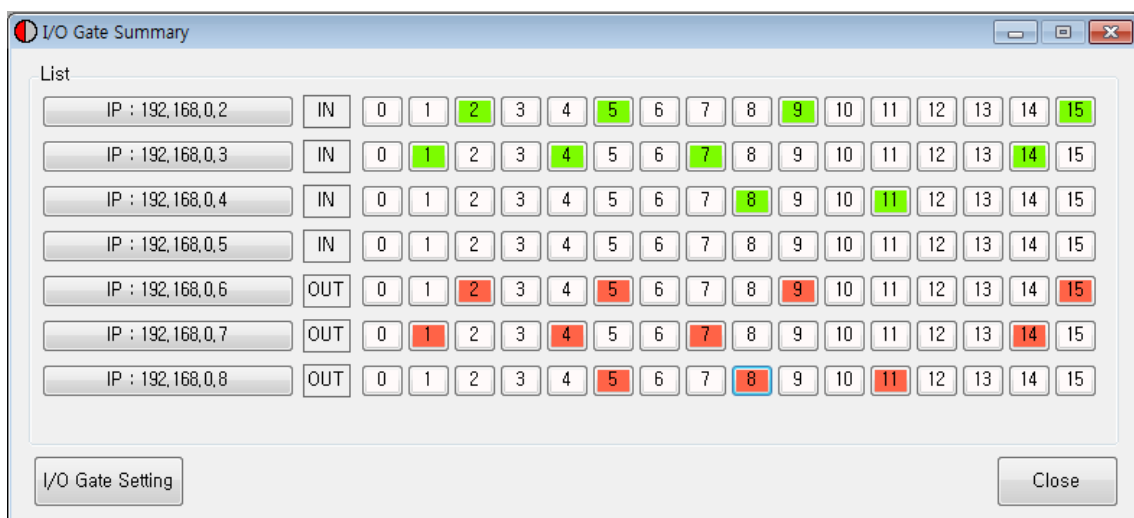
Input(I16x type board) : The input Active Level setting / load / save

Output(O16 type board) : The output Active Level setting / load / save

- I/O Gate Summary

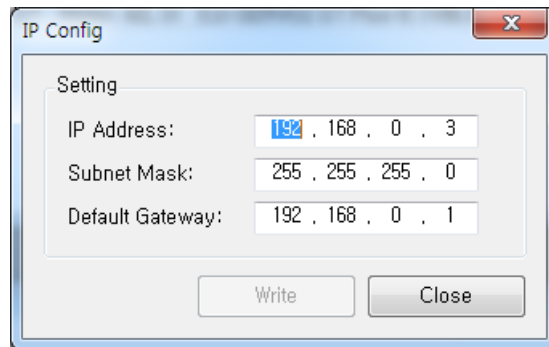
The input / output status of the connected input / output board can be monitored at once.

Ez-IO-O16 type board can be controlled and monitored.



- Config Slave ID / IP Address

To configure IP Address / Subnet Mask / Gateway.



After clicking "Write" and Power reset, Configuration is applied.

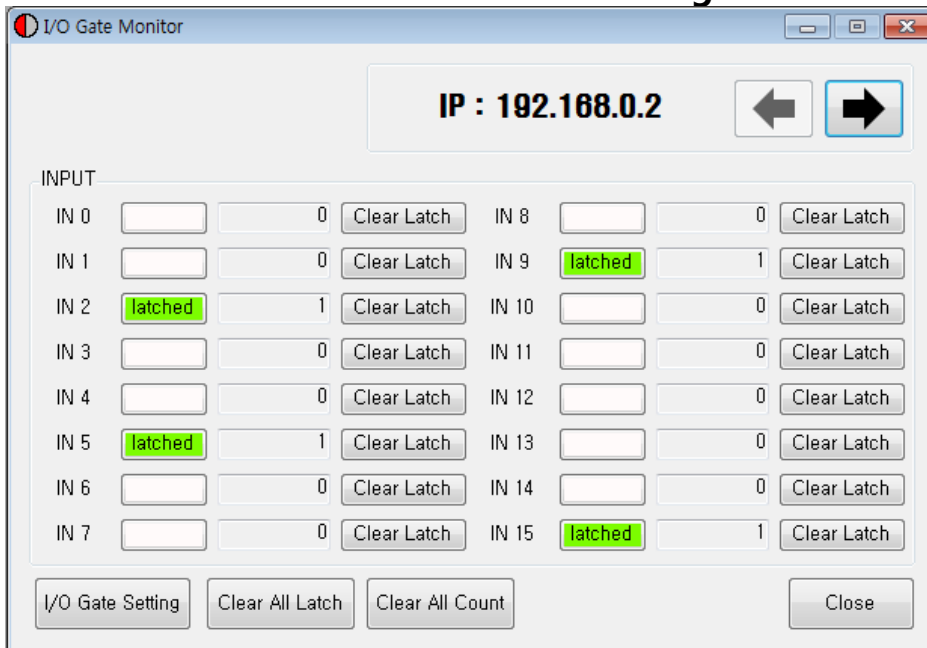
Final number of IP Address does not change.

Final number can be **set via Switch**.

Ex) If changing IP Address : 192.168.0.3 → 192.169.10.100, then it's changed to 192.168.10.3

3 . I/O Monitoring and I/O Logic Setting

3 - 1 . Ez-IO-PE-I16 series Monitoring



1) Input signal :

Displays current input status Input signal [ON] : Green

Input signal [OFF] : White

Displays current Latch status

Latch [ON] : latched display

Latch [OFF] : latched do not display

Click on the Clear latch to clear latched..

2)Latch count :

Count the number of times the input is turned on.

If also counts when input is changed(Off->On) in latched state.

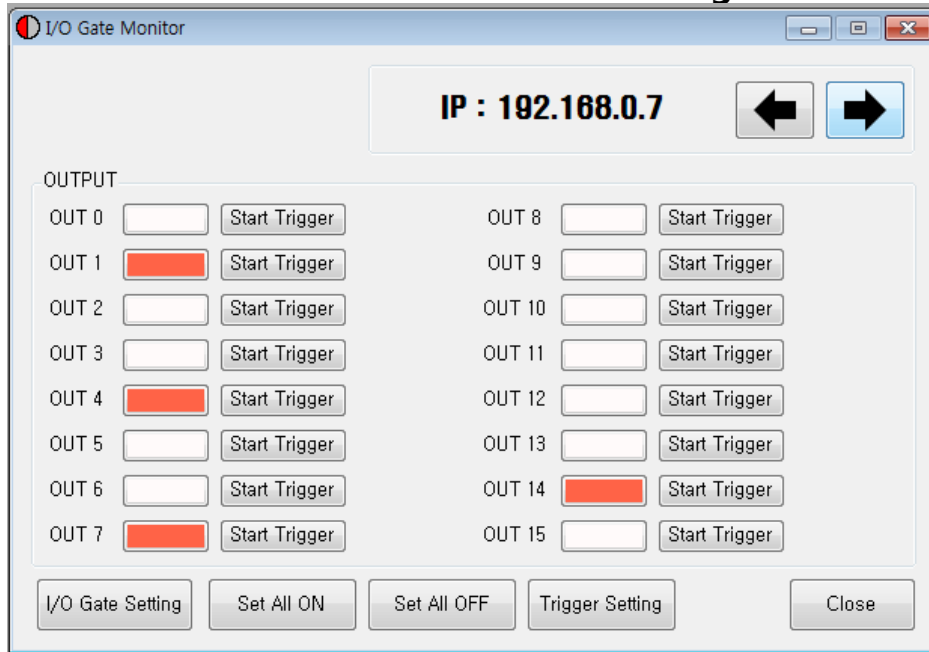
3)Clear All Latch :

Latch clear all No. 0~15.

4)Clear All Count :

The latch count is initialized (0) all No. 0~15

3 - 2 . Ez-IO-PE-O16 series Monitoring



1) Output signal :

If you click the white button corresponding to 'OUT0' ~ 'OUT15', the corresponding pin signal will change to [ON] / [OFF]. Output signal [ON] : Red

Output signal [OFF] : White

2) Strat Trigger :

Execute Trigger that is set by Trigger Setting

3) Trigger Setting :

Enables a window to enter information about the trigger output. And enter the information.

4) Set All ON :

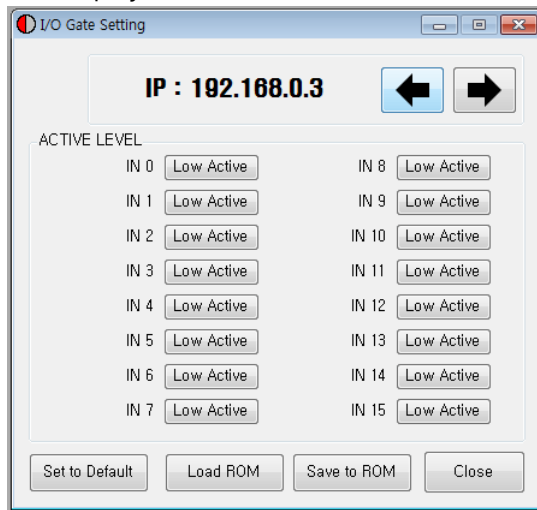
All the outputs of No. 0~15 [ON]

4) Set All OFF:

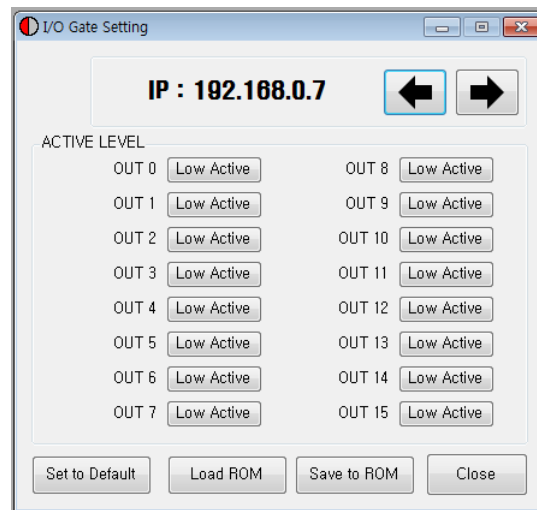
All the outputs of No. 0~15[OFF]

3 - 3 . I/O Logic Setting

Click 'I/O Logic Setting' icon at the I/O Monitor window, and the following window will be displayed..



Ez-IO-PE-I16 series



Ez-IO-PE-O16 series

1) Signal Level Assignment :

These buttons provide the user with functions that he can select the active level of signal for the signal to be recognized to [ON]. He can click the button to the right of the signal name and set the signal.

* Low Active : when the signal is set[ON] to 0 volt

* High Active : when the signal is set[ON] to 24 volt

2) Save to Rom :

By default, all changes are temporarily stored in RAM, and you must click the 'Save to ROM' button to save them to ROM.

3) Load Rom :

Load the settings stored in ROM to RAM.

4) Set to Default :

Change the entire level to [Low Active].



Fast, Accurate, Smooth Motion

FASTECH Co., Ltd.

경기도 부천시 원미구 약대동 193번지

부천테크노파크 401동 1202호 (우)420-734

TEL : 032)234-6300,6301 FAX : 032)234-6302

E-mail : fastech@fastech.co.kr

Homepage : www.fastech.co.kr

- 사용자 설명서의 일부 또는 전부를 무단 기재하거나 복제하는 것은 금지되어 있습니다.
- 손상이나 분실 등으로 사용자 설명서가 필요할 경우에는 본사 또는 가까운 대리점에 문의하여 주십시오.
- 사용자 설명서는 제품의 계량이나 사양 변경 및 사용자 설명서의 개선을 위하여 예고 없이 변경되는 경우가 있습니다.
- Ezi-IO Plus-E 은 국내에 등록된 FASTECH Co.,Ltd.의 등록상표입니다.

© Copyright 2016 FASTECH Co.,Ltd. Jun 30, 2016 Rev.01